

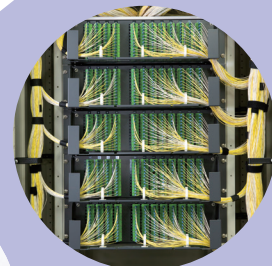
LYNX-CustomFit™ Splice-On Connector
LYNX2 Connector



**Agile solution
for Data Center**



Full Lineup



Just Length



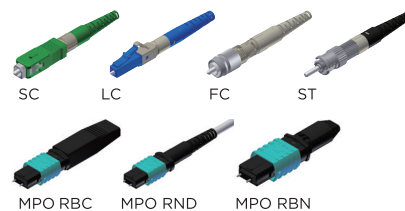
No pre-survey

Lynx-CustomFit™ Splice-On Connector Ver.2

- Low insertion loss
- Low return loss for analogue systems, etc.
- Wide temperature stability

Field installable connectors with:

Single Fibre	TYPE-71C/71C+	TYPE-71M12	TYPE-201x/201ex	T-55	T-400S
MPO	TYPE-71M12				



Standards and Optical performance

	Lynx2-SC	Lynx2-LC	Lynx2-FCM	Lynx2-ST	Lynx2-MPO
Interface standard	IEC61754-4	IEC61754-20	IEC61754-13	IEC 61754-2	IEC61754-7
Insertion Loss (against master plug)	SMF: Ave. 0.2dB, Max. 0.3dB MMF: Ave. 0.1dB, Max. 0.25dB				SMF,MMF Low Loss (LL) Max. 0.4dB SMF Standard Loss Max. 0.75dB
Return Loss (against master plug)	SMF: ≥ 60dB (APC), ≥ 55dB (UPC) MMF: ≥ 30dB (PC)				

Lineup for Single fibre connector

Connector type	Polishing type	Fibre Type	Connector Color	Fibre / Cord diameter	Boot type
SC LC FCM ST	APC	SM	Green	250 / 900µm Tight Buffer	Standard boot Short boot *
	UPC	SM	Blue	900µm Loose Buffer	
	PC	MM50(OM2)	Black	2mm with 900µm Tight Buffer	
		MM50(OM3)	Aqua	2mm with 900µm Loose Buffer	
		MM62.5(OM1)	Beige	3mm with 900µm Tight Buffer	

*Short boot is available for SC and LC type of 250 / 900 µm tight buffer and 900 µm loose buffer.

Lineup for MPO connector

Guide Pin	Fibre/Polishing type	Connector Color	Cord diameter
With / Without guide pin	SM Low loss	Yellow	RBN: 12c Bare Ribbon RND: 12c Round cord (φ 3mm) RBC: 12c Ribbon cord
	SM Standard loss	Green	
	MM50(OM2) Low loss	Black	
	MM50(OM3) Low loss	Aqua	
	MM62.5(OM1) Low loss	Beige	

Assembly tool

Tool name		Fibre cleaver [FC-8R-MC]	Jacket remover [JR-M03]	Hot jacket remover [JR-6]	Sheath splitter [LYNX-CORDTOOL-1.6-2.4]	Sheath splitter [LYNX-CORDTOOL-2.0-3.0]	Kevlar snips [N-57]
Appearance							
Single Fibre	Cord	●	●	—	● for 1.7mm cord	● for 2mm cord / 3mm cord	●
	Fibre	●	●	● for φ0.25~0.4mm fibre	—	—	—
MPO	Round Cord / Ribbon Cord	●	—	●	—	● for round cord / ribbon cord	●
	Bare Ribbon	●	—	●	—	—	—

Fibre holders for single fibre connector

Type	Left side (setting fibre / cord)	Right side (setting ferrule sub-assembly)
250µm Fibre	FHS-025 LYNX2-S-LB5(2MM)	LYNX-C (Plastic, Standard) * LYNX-UML-C (Metal, Option)
900µm Tight Buffer	FHS-09 LYNX2-UML-S	
900µm Loose Buffer	LYNX2-S-LB5(2MM)	
2mm cord with 900µm Tight Buffer	LYNX-UML-S	
2mm cord with 900µm Loose Buffer	LYNX2-S-LB5(2MM)	
3mm cord with 900µm Tight Buffer	LYNX-UML-S	

* 1 pc of LYNX-C holder is supplied with every 100 connectors.

Fibre holders for MPO connector

Type	Left side (setting fibre / cord)	Right side (setting ferrule sub-assembly)
Bare Ribbon	12-fibre: FHM-12 8-fibre: FHM-8	LYNX2-C(MT) (Plastic, Standard) * LYNX2-C(MT) Metal (Metal, Option)
Round Cord		
Ribbon Cord		

* 1 pc of LYNX2-C(MT) holder is supplied with every 100 connectors.

SUMITOMO ELECTRIC INDUSTRIES, LTD.

Tokyo (Japan)

Sumitomo Electric Industries, Ltd.

TEL: (81)3-6406-2666

<http://global-sei.com/sumitomo-electric-splicers>

London (United Kingdom)

Sumitomo Electric Europe Ltd.

TEL: (44) 208-953-8118

<http://www.sumielectric.com>

Raleigh (United States)

Sumitomo Electric Lightwave Corp.

TEL: (1) 919-541-810

<https://www.sumitomoelectric.com>

Dubai (U.A.E.)

Middle East Office

TEL: (971) 4-701-7338

Milano (Italy)

Sumitomo Electric Europe Ltd.

TEL: (39)-024-9638601

Melbourne (Australia)

SWS Australia Pty. Ltd.

TEL: (61) 3-8401-2800

San Paulo (Brazil)

SEI Brazil Solucoes Opticas Ltd.

TEL: (55) 15-3416-7100

<http://www.seibrazil.com.br>